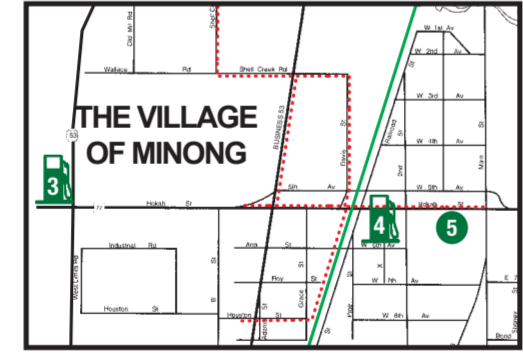
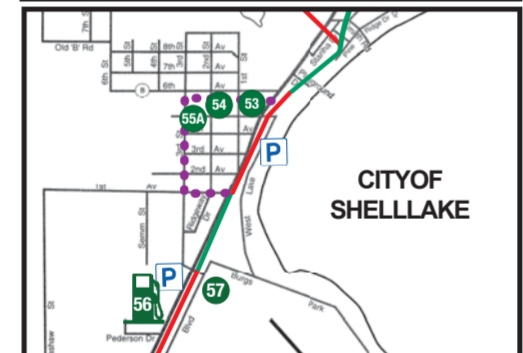
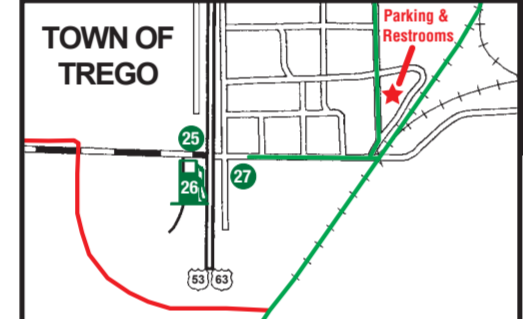
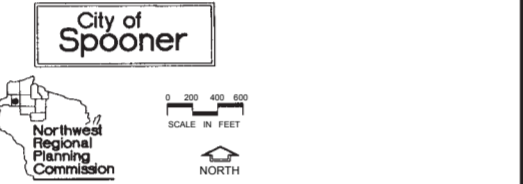


LEDGER OF PIT STOPS

1. The Golden Chipmunk
2. Kimball Lake Resort
3. Link Stop/AW/Grandma Link's
4. DC's Victory Lane
5. Long Branch Saloon
6. Rosenthal's Resort
7. Pappy's Leathernecks Tavern
8. Outback Bar
9. Heartwood Conference Center
10. The Main Store
11. Glider's Bar & Grill
12. Four Star Sports
13. The Shop Bar & Grill
14. McKenzie Landing
15. West Point Lodge
16. Road Trip Bar & Grill
17. Lipsie Pines
18. Wolf Point Bar & Grille
19. Camp Namekagon
20. Norton Excavating
21. Twin Oaks
22. Pair O' Lakes
23. Lookers Gentlemen's Bar
24. Broken Spoke Saloon
25. Trego Travel Center
26. Prime Bar Family Dining
27. Wild River Sport & Marine
28. Uncle Mike's Bar & Grille
29. Auto Stop/Holiday Station Store
30. Spooner Machine
31. Inn Town Motel
32. Holiday Station Store
33. Tracks Bar & Family Dining
34. Lakes & Trails Marine/Sm Engine
35. RC Gifts/Red Cross Pharmacy
36. Spooner Bake Shoppe
37. Big Dick's Buckhorn Inn
38. Hank & Johns
39. Tamarack
40. Dave's Hardware Hank
41. Washburn County Tourism
42. Indianhead Credit Union
43. American Heritage Inn
44. Tony's Riverside
45. Economart
46. Country House Motel/RV Park
47. Wolverine Tire & Auto Care
48. White Birch Printing
49. Cortez Spray Technologies
50. Green Acres Motel
51. Northwest Lodging
52. Lakeview Bar & Grill
53. Dabstrom's Lakeside Market
54. Shell Lake State Bank-Shell Lake
55. Shell Lake State Bank-Saronia
56. Country Pride/Cenex
57. Becky's Food & Spirits
58. The Getaway
59. Barronett Bar & Grill
60. Rummel's Tap
61. Long Lake Bait, Tackle & C-Store
62. Hobo's Hideout
63. The Pioneer on Long Lake
64. Greener's Reel 'Em Inn
65. Prop's Sports Bar & Grill
66. Lincolnwood Resort
67. Spinal Lake Saloon
68. Seasonal Power Toys & Boat
69. Ed's Pit Stop
70. Full Throttle Sports

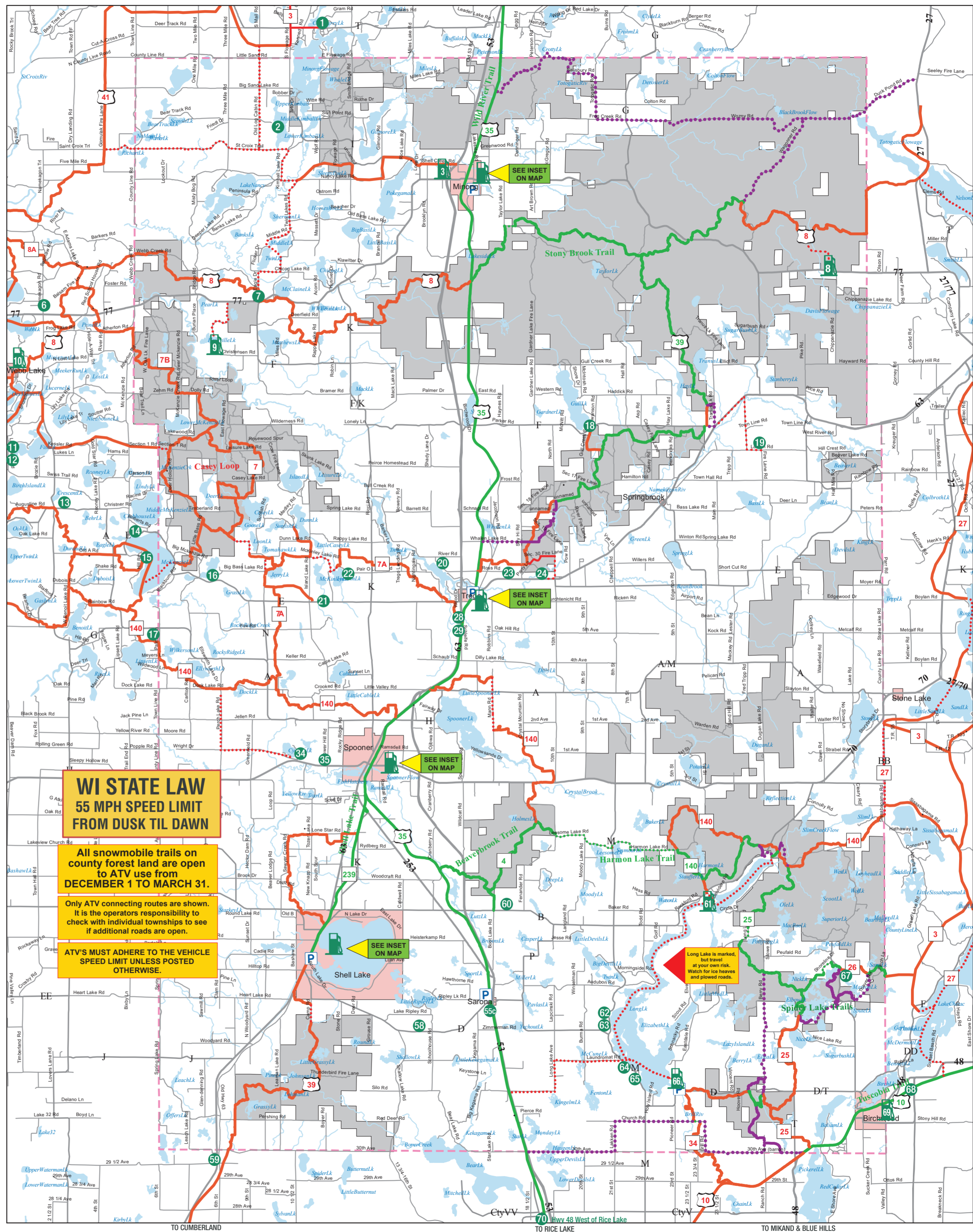
LEGEND

- User Funded & Local Club Snowmobile Trails
- Designated Snowmobile Routes (paved and unpaved roads), Lakes, or Private Trails. May or may not be groomed. Lake travel at your own risk.
- Snowmobile/ATV Route (Year Round)
- Snowmobile/ATV Trail (Year Round)
- Summer ATV Route
- Summer ATV Trail
- Sponsor's Map Identification
- Indicates Gas Available
- SCALE** 1" = 2 Miles
- 140- Trail Number
- Washburn County
- Parking



TRAIL SIGN GUIDE

- BLAZER** - To make sure that you are on the designated trail, watch for the blazer. Where trail exits and entrances are minimal, they will be kept to a minimum.
- DIRECTIONAL ARROW** - This arrow will advise trail users of a change in trail direction where your speed should be reduced to negotiate a curve or corner.
- CAUTION** - Look for caution signs to warn you of a change in trail condition. Prepare to reduce your speed.
- STOP & YIELD** - Stop signs are used to halt users on a snowmobile trail at road crossings, highway bridge crossings, public railroad grade crossings or trail intersections.
- BRIDGE, CULVERT & HAZARD MAKER** - Snowmobile bridge and culvert crossings are signed with reflective black and yellow hazard markers. Used in pairs, they mark the opening through which you must pass.
- CORRIDOR SIGNS** - Assign like this one designates major travelways out of metropolitan areas and major north-south and east-west corridors. It has a blue background with a white badge symbol.
- SNOWMOBILE ROUTE SIGNS** - The main use of this sign and route arrow is to inform snowmobilers that it is permissible to use the traveled portion of the road or highway. It also alerts traffic that snowmobilers are using the road for travel. The arrow informs trail users which way to proceed on a road or highway. Where the trail begins again, a blazer will indicate the direction that the trail takes.



WI STATE LAW
55 MPH SPEED LIMIT
FROM DUSK TIL DAWN

All snowmobile trails on county forest land are open to ATV use from DECEMBER 1 TO MARCH 31.

Only ATV connecting routes are shown. It is the operator's responsibility to check with individual townships to see if additional roads are open.

ATV'S MUST ADHERE TO THE VEHICLE SPEED LIMIT UNLESS POSTED OTHERWISE.

Long Lake is marked, but travel at your own risk. Watch for ice heaves and plowed roads.